



City of Beacon

Parking and Traffic Safety Committee

City Hall

1 Municipal Plaza, Beacon, NY 12508

Agenda

October 22, 2020 at 9 am

Due to the COVID-19 pandemic, the Parking and Traffic Safety Committee (PTSC) will meet via video call.

➤ **Old Business**

1. Update on parking regulations near Mount Beacon

➤ **New Business**

1. Churchill St. and Main St.
2. Fishkill Ave. Parking
3. Fishkill Ave. Convex Mirror

➤ **New Business**

1. Churchill St. and Main St.

Need to look at 'dangerous' intersection To the Editor: I had the opportunity to sit and observe the intersection of Main Street/Tioronda Avenue/Churchill Street for over 10 hours on Sunday, September 21 and Sunday, September 27. During that time I witnessed a number near-accidents involving both cars and pedestrians. This intersection has been a known problem for years, and multiple traffic studies have been done, with recommendations made for various traffic calming measures, including a stop sign on the corner of Tioronda and Main Street in front of the Howland Cultural Center. Both residents and visitors to our city do not slow down at "the bend" and it truly is only a matter of time before a tragedy occurs. [The Council] should make this a priority before there is a serious injury or death. Additionally, on Sunday, September 27 (also the Spirit of Beacon Day) there was a profusion of trash and other detritus overflowing the two trashcans on the north side of the street. Alcoholic beverage containers, coffee cups, pizza boxes, etc, piled up in the trash can and on the street below. It might be worth looking at how to mitigate that as well. It was like nothing I've ever seen before, and unfortunately right in front of the "Jewel of Beacon," The Howland Cultural Center. It looked like to me as if there is very little attention paid, care taken, or pride in our city. We need to do better.

2. Fishkill Ave. Parking

Main Street Access Advisory Committee Co-Chairs Sara Pasti and Stowe Boyd will be joining the Traffic Safety Committee to discuss paring on Fishkill Avenue. See the attached map.

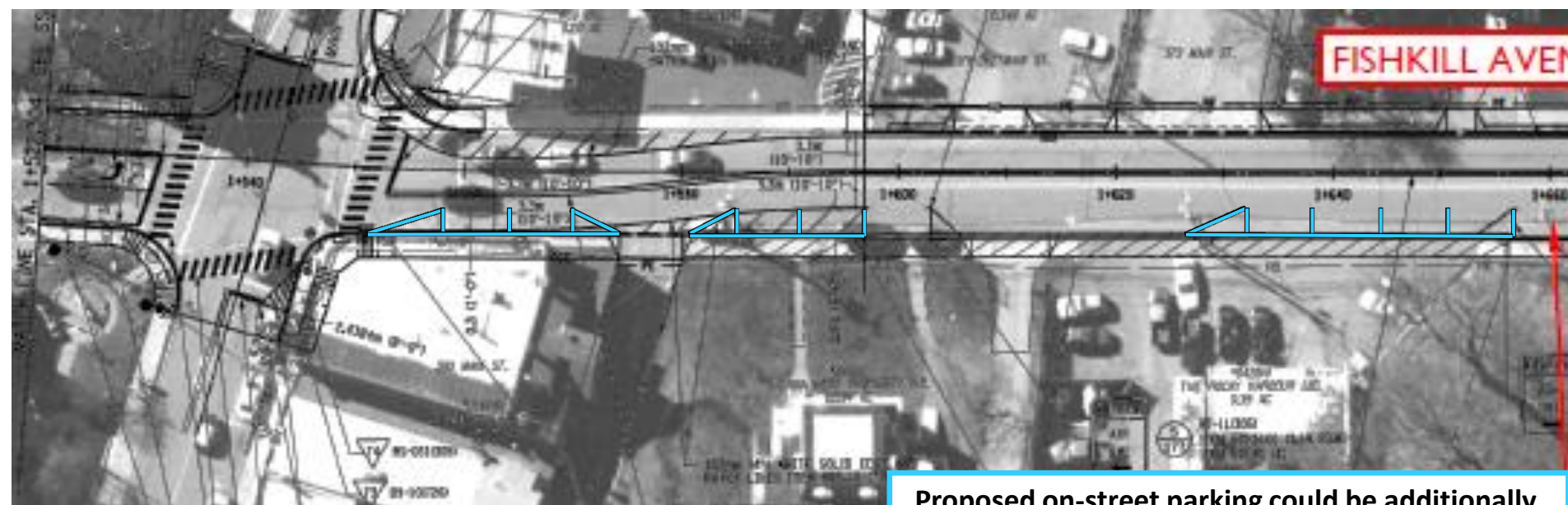
3. Fishkill Avenue Convex Mirror

See the message below from a resident.

I am writing to request a convex mirror be placed on a telephone pole opposite our driveway. We are located on Fishkill Avenue and we are not able to see oncoming traffic until we are halfway into the street which is very unsettling. If you could tell me how to go about sending this request to the most appropriate place, I would greatly appreciate it. I have contacted the Vehicles and Traffic department and Dutchess County but I am not having any luck.



**Fishkill Avenue Project Plan by
WSP Global Engineering Firm,
Plus Proposed Parking from
416-420 Main Street Consultant**



**Proposed on-street parking could be additionally
increased by closing wide curb cut at auto shop
and reconsidering new lane shift at Main Street**