

# COMMUNITY FACILITY & PROGRAM REPORT

Project Overview & Status Update

City of

Beacon, New York



June 6, 2022

Daniel Biggs, RLA  
Principal-in-Charge



# who we are

Established in 1899, **Weston & Sampson** is a full-service **planning, and design** consulting firm.

Over 700 professionals focused on **public work**.

Our Services:

- Master Planning
- Parks & Recreation Planning
- Landscape Architecture
- Ecological / Environmental Services
- Civil / Structural Engineering
- Aquatic Facility Planning + Design
- Permitting & Compliance



Past Projects: **Hudson River Trail Master Plan + Design, Riverfront Park Improvements**

# project understanding

developing a city-wide community facility and program report

The City of Beacon seeks to develop a report which will focus on each of the city's recreational and community facilities and programs, as well as partnerships with local community organizations, to assess the current and future programming opportunities and recommend an implementation strategy to achieve the City's vision and goals of expanded programs.



## project objectives

developing a city-wide community facility and program report

Compile a Recreation Facility & Program Inventory

Develop a Community Recreation Needs Assessment

Prepare a Community Facility & Program Report

# project scope & schedule

developing a city-wide community facility and program report

## Task 1 – Kickoff Meeting & Existing Conditions Analysis

- April - June 2022 (*In Progress*)
  - Conduct site investigations of existing recreation and programming facilities within the City, accompanied by City Staff
  - Review background documentation, including the 2013 Centennial Book, 2017 Comprehensive Plan, 2017 Fee Study Report and 2020 Natural Resources Inventory
  - Develop a base map from available GIS data
  - Compile a comprehensive inventory of existing programs, activities, and community services provided through the City and associated volunteer and community organizations.

# project scope & schedule

developing a city-wide community facility and program report

## Task 2 – Community Recreation Needs Assessment

- May - June 2022 (*In Progress*)
  - Prepare a Community Recreation Needs Assessment to analyze recreation trends, community needs, programming needs and investment prioritization
    - Specific attention given to potential centralized community center
  - Conduct a Demographics & Trends Analysis to predict changes to the population (age, gender, ethnicity, income, etc.) and identify regional interest and participation levels for existing and future recreation facilities and programming
  - Conduct a Facility Inventory, Resource Mapping and Level of Service Analysis utilizing information gathered in Task 1 to evaluate potential future park sites, parcels for development, trail corridors, programming distribution, etc.
  - Conduct a Program Inventory Analysis of programs and services currently provided by the City and relevant associations (schools, volunteer groups, etc.) to categorize the types of programs offered within the City and help inform the public engagement process

# project scope & schedule

developing a city-wide community facility and program report

## Task 3 – Public Outreach

- June – October 2022
  - Conduct stakeholder interviews & focus group meetings
  - Develop a survey to be distributed through municipal channels, park ambassadors, email (*Can be completed either online or as a paper copy*)
  - Park ambassadors and/or City staff to attend public events throughout the summer to distribute the survey and inform public of the project
    - *Bookend with Strawberry Festival and Spirit of Beacon Day*
  - Public Meeting in September to inform residents of the project status and encourage participation in the survey
  - Public Meeting in October to present the results of the Survey and share next steps

# project scope & schedule

developing a city-wide community facility and program report

## Task 4 – Draft & Final Report

- November – December 2022
  - Findings Presentation to be shared with City Staff and at a public meeting
  - Compile a Key Issues Analysis Matrix to identify focus areas of the report
  - Conduct a Visioning Workshop to analyze findings, assess feasibility, and identify potential constraints & challenges
  - Develop recommendations for addressing community wants & needs, identify potential property acquisitions & development opportunities, create schematic plans for potential new facilities, and prioritize specific goals or projects
  - Identify potential funding strategies through taxes, grants, donors, and partnerships
  - Prepare a Draft Report encompassing data gathered from previous tasks for review and comment by the City
  - Present Final Report at a public meeting and potential approval at a City Council Meeting

# status update

## task 1 - kickoff meeting & existing conditions analysis

- Held kickoff meeting on April 11<sup>th</sup> with staff to review project goals, tasks, schedule
- Completed Existing Conditions Analysis
  - Reviewed background materials provided by the City
  - Performed site visits with staff on April 19<sup>th</sup>
  - Developed Existing Conditions Inventory for City-owned & operated facilities
    - South Avenue Park
    - Polhill Park
    - Pete & Toshi Seeger Riverfront Park
    - Memorial Park
    - Hiddenbrooke Park
    - Green Street Park
    - The Settlement Camp
    - Fishkill Creek Greenway & Heritage Trail
    - And others.

# status update

task 1 - kickoff meeting & existing conditions analysis

Recreation Department Building at South Avenue Park (23 West Center Street)

- Office / Conference Space
- Small Gymnasium
- Program Highlights
  - Grocery Distribution
  - Classroom / Educational Space
    - Beacon Community Tai Chi
    - Imagination Playground Block Party
    - Zumba Gold



# status update

task 1 - kickoff meeting & existing conditions analysis

## South Avenue Park

- Good Condition
  - Community Garden
  - Recreation Center
  - Pavilion
  - Turf & Vegetation
- Fair Condition
  - Tennis & Basketball Courts
  - Playground
  - Parking
  - Paths
- Poor Condition
  - Horseshoe & Bocce Ball Areas
  - Signage
- Program Highlights
  - **Rec Center Support**



# status update

task 1 - kickoff meeting & existing conditions analysis

## Polhill Park

- Good Condition
  - Visitor Center
  - Bus Shelter
  - Trees & Vegetation
  - Signage
- Fair Condition
  - Benches & Tables
  - Paths
  - Pop-Up Library
  - Turf
- Program Highlights
  - Little Free Library
  - Councilmember “Office Hour” Location
  - March / Walk Point
  - Community Gathering



2022 04 19

# status update

task 1 - kickoff meeting & existing conditions analysis

Pete & Toshi Seeger Riverfront Park

- Good Condition
  - Pavilion
  - Shoreline
  - Storage Sheds
  - Signage
  - Turf
- Fair Condition
  - Volleyball Courts
  - Playground
  - Parking
  - Trees & Vegetation
- Poor Condition
  - Benches, Tables & Grills
  - Paths
  - Basketball Courts
- Program Highlights
  - **Beacon Hoops**
  - **River Pool / Swim**



# status update

task 1 - kickoff meeting & existing conditions analysis

## Memorial Park

- Good Condition
  - Skate Park
  - Playground Areas
  - Restroom
  - Trees & Vegetation
- Fair Condition
  - Athletic Fields
  - Pavilions
  - Parking
  - Turf
  - Storage Sheds
- Poor Condition
  - Basketball Courts
  - Tennis Court
  - Benches, Site Amenities
- Program Highlights
  - Pop Warner Football
  - Meeting Space
  - Beacon Jr. Baseball
  - Beacon Jr. Softball
  - **Multi-Sport Camp**
  - **Grocery Distribution**



# status update

task 1 - kickoff meeting & existing conditions analysis

## Hiddenbrooke Park

- Good Condition
  - Turf & Vegetation
- Fair Condition
  - Hiking Trails
  - Parking Area
  - Signage
- Program Highlights
  - Open / Natural Space



# status update

task 1 - kickoff meeting & existing conditions analysis

## Green Street Park

- Good Condition
    - Playground
    - Parking
    - Paths
    - Turf & Vegetation
  - Fair Condition
    - Basketball Court
    - Pavilion
    - Ball Game Pole
    - Restroom
  - Poor Condition
    - Signage
- Program Highlights
    - Community Gathering



# status update

task 1 - kickoff meeting & existing conditions analysis

## The Settlement Camp

- Good Condition
    - Trees & Vegetation
    - Theater Building
  - Fair Condition
    - Disc Golf Course
    - Pool Facility
    - Camp Buildings
    - Camp Barn
    - Homestead Buildings
    - Signage
    - Turf
  - Poor Condition
    - Various Structures
    - Parking
- Program Highlights
    - Summer Camp
    - Wedding Venue
    - Drive-In Theater
    - Youth Swim Lessons
    - Aqua Zumba
    - Disc Golf
    - Sargent Downing Garden Club
    - Beacon Bouldering



# status update

task 1 - kickoff meeting & existing conditions analysis

## Fishkill Creek Greenway & Heritage Trail

- Good Condition
  - Benches, Site Amenities
  - Trees & Vegetation
  - Turf
- Fair Condition
  - Signage
  - Paths
- Program Highlights
  - Trails



# status update

task 1 - kickoff meeting & existing conditions analysis

## City Operated Community Facilities & Programs

- **Beacon Housing Authority**
  - Grocery Distribution
  - Hair Salon (Residents Only)
- **Camp Beacon**
  - TBD, former low security work camp
- **City of Beacon DPW Facility**
  - Community Flex Space
- **Former Beacon Fire Department HQ**
  - TBD, Potential Community Flex Space
- **Memorial Building**
  - Community Flex Space
  - VFW



# status update

task 1 - kickoff meeting & existing conditions analysis

## Beacon City School District Operated Recreation Facilities & Programs

- Beacon High School
  - Pool
  - Gymnasium
  - Weight Room
  - Theater Room
  - Community Flex Space
  - Tennis Courts (8)
  - Baseball Field (1)
  - Softball Field (1)
  - Soccer Fields (2)
  - Multi-Sport Turf Field (1)
- Rombout Middle School
  - Multi-Use Grass Field
- Glenham Elementary School
  - Gymnasium
  - Playground (2)
  - Multi-use Grass Field
  - Baseball Field (1)
- JV Forrestal Elementary School
  - Gymnasium
  - Community Garden
  - Playground
- Sargent Elementary School
  - Playground
  - Beacon Soccer Club Complex
  - Gymnasium
- South Avenue Elementary School
  - Playground
  - Basketball Courts



- Program Highlights at Elementary Schools
  - **After School Program**
- Program Highlights at Rombout Middle School
  - **Multi-Sport Camp**

# status update

task 1 - kickoff meeting & existing conditions analysis

## Other Community Facilities & Programs

### Additional Facilities

- Dennings Point State Park – Trails
- Dia Beacon – Art Gallery, Community Flex Space
- Elks Lodge/ Beacon Elks – Community Flex Space
- Fishkill Correctional Community Center – Community Flex Space (Staff Only)
- Former Beacon High School – Art Studios
- John Street Building
- Long Dock Park – Hudson River Sloop Clearwater, Kayak Launch, Trails
- Madam Brett Park – Trails
- Main Street Building
- Main Street (Outdoor Events)
- Mount Beacon Park – Trails, Observation Tower
- Riverfront Park + Building
- Salvation Army



### Faith Based Organization Facilities

- Christ Church United Methodist
- Cedar Street Building
- Delavan St Building
- Hanna Lane Building
- Leonard Street Building
- Route 52 Building
- South Ave Building
- Union Street Building

# status update

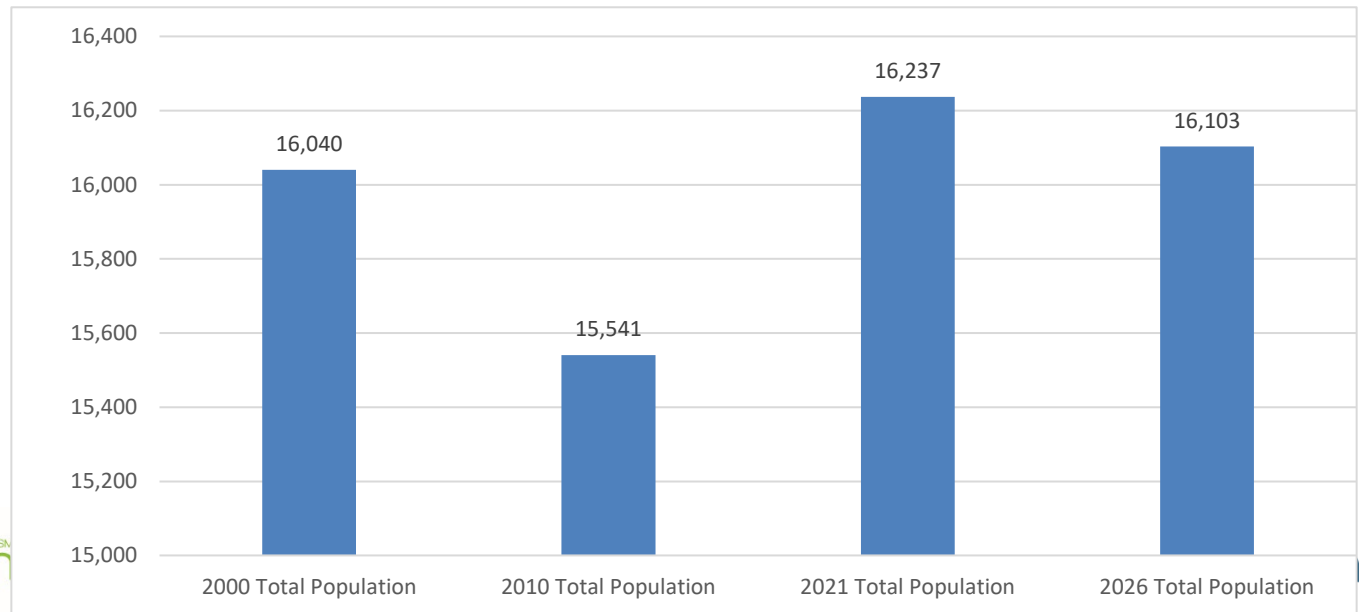
task 2 - community recreation needs assessment (in-progress)

**Community Demographic Profile** - to provide an analysis of household and economic data in the area, helping to understand the historical and projected changes that may impact the community. (*Esri Business Analyst 5/22*)

## Population:

- Since 2000, the community has not experienced significant growth or decrease in population.
- From 2010 to 2021, the compound annual growth rate was 0.39%, but is projected to decline to a rate of -0.17% from 2021 to 2026.

**16,237**  
Population

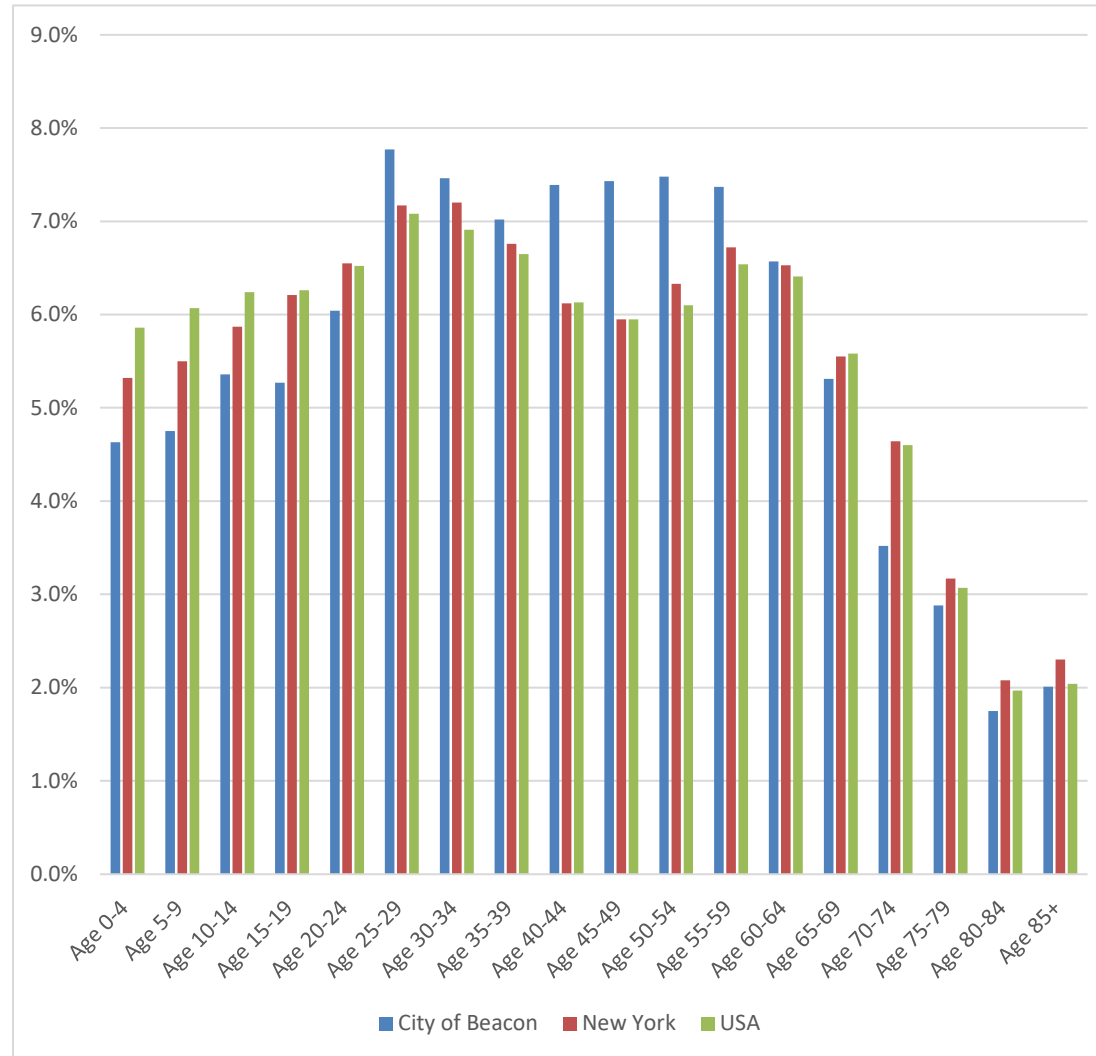


# status update

## task 2 - community recreation needs assessment (in-progress)

### Age

- Median age = 41.1 yrs old (NYS 39.6 and US 38.8).
- Age distribution = middle age to older adults.
- From 2010 to 2021
  - 45 to 49 yr old age group had largest increase of 1.83%
  - 60 to 64 yr old age group had largest decline in population with a 1.67% decrease.

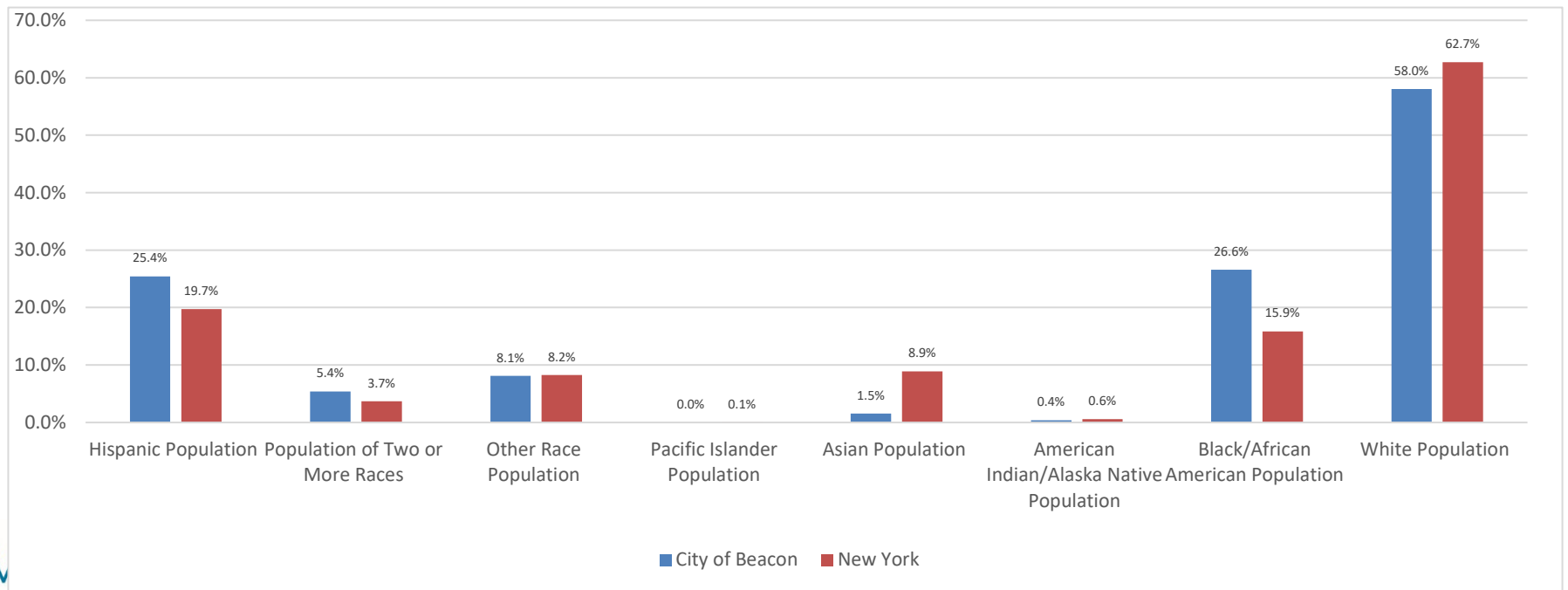


# status update

task 2 - community recreation needs assessment (in-progress)

## Diversity

- 25.4% - Hispanic origin (NYS - 19.7%)
- 26.6% - Black and African American
- 58% - White or Caucasian
  - Over 5% identified as a population of two or more races
  - 8.1% identified as a race not identified in the U.S. Census.



# status update

task 2 - community recreation needs assessment (in-progress)

## People with Disabilities

- 13.4% of Beacon's population in 2020 live with a disability. (NYS 11.6%).
- Types of disabilities within the City of Beacon:
  - Hearing difficulty – 3.2%
  - Vision difficulty – 1.8%
  - Cognitive difficulty – 4.5%
  - Ambulatory difficulty – 6.5%
  - Self-care difficulty – 2.1%
  - Independent living difficulty – 6.5%

## Health Outcomes

Dutchess County is ranked among the healthiest counties in New York; in 2020 (15th out of 62 NYS Counties)

HEALTH STATS

16% adults identify as smokers

70% have access to exercise opportunities

5% have no health insurance

33% of population considered obese

24% considered physically inactive

# status update

## task 3 - public outreach

### Overall Strategy - Public Engagement Principals:

- **Inform** – Communicate to community members and stakeholders about the project and raise awareness about the master planning process, schedule, and how people can be involved and stay informed.
- **Consult** – Present the project to the steering committee and community throughout the public engagement process.
- **Involve** – Establish a project steering committee to help advise the progress of the project, collect public input, and give out information about the project.
- **Collaborate** – Analyze, evaluate and discuss public comments to respond and categorize similar topics with the steering committee and community.
- **Empower** – Community members and stakeholders should understand that new facilities come with new programming that the public can help shape and inform.

### Stakeholder Interviews & Focus Group Meetings (Early June)

- One-Day workshops with representatives from committees, City departments, Council members, special interest groups, and open to the public. Potential representatives include:
  - Youth Sports Organizations
  - School Organizations
  - Community Groups
- Goal of the workshops are to kickoff the public engagement process and get a first look at some of the needs and desires of interested community groups. Input gathered from the workshops will help inform the final version of the public survey and be incorporated into the final report.

# task 3

## public outreach

### Online Survey (July - September)

- An online survey will be developed based on stakeholder and Council feedback to seek input on whether a centralized community center is needed, and if so what programs or services are desired for this space. Survey can be advertised on the City's, promotional flyers could be included in City distributed mail, and park ambassadors can promote the survey at events throughout the summer.
- Survey will be translated into Spanish.
- Survey will include questions about demographic information, programs currently used by respondents, ease of access / travel times to these programs, transportation uses / preferences, additional programs desired by the respondents, and opportunities to sign up for additional information about the project.

# task 3

public outreach

## Online Survey (July - September)

City Events - Park Ambassadors can share survey to attendees on tablets or laptops at:

- Beacon Dog Park Stop By
- Beacon Free Loop Bus
- Beacon Hoop Summer Basketball Nights Stop By
- Beacon Housing Friendship Center Stop By
- Beacon Mutual Aid Grocery Distributions
- Beacon Sloop Club Weeknight Sails
- BeaconArts and Chamber of Commerce
- Community Cook Out at South Ave Park
- Fareground Grocery Distributions
- Green Teen Weekly Market
- PTO/ PTA in school outreach
- Public Hours at the Beacon Pool
- Saturday Rec Center Food Pantry
- Spirit of Beacon Day
- Summer and Fall Festivals
- Summer Playground Stop By
- Summer Programming Attendants
- Sunday Farmers Market
- Youth Summer Sports Stop By

# task 3

## public outreach

### Public Meetings (September - October)

- Public Meeting #1 – Community Input (Late Sept)
  - Provide information and expand upon information received from the focus group and online survey. Focus on gather thoughts, ideas, needs and desires from the community and share pertinent existing conditions information.
  - Final push for online survey responses before closing survey at end of September
- Public Meeting #2 – Findings Presentation (Oct)
  - Present a summary of the findings from the existing conditions inventory, survey, and analyses to validate findings with staff, stakeholders, and the community.
  - Gather final round of input to be included in the Report.
- Draft Report (Nov)
- Final Presentation for Adoption (Dec Workshop + Council Meeting)

# project schedule

Phase	Month									
	Apr	May	Jun	Jul	Aug	Sept	Oct	Nov	Dec	
1   Kickoff + Existing Conditions Analysis	M									
2   Community Recreation Needs Assessment										
3   Public Outreach			M		M			M		
Stakeholder Interviews										
Digital Community Survey										
Public Meeting #1 (Community Input)										
Public Meeting #2 (Findings Present)										
Draft Recommendations Present										
Final Presentation										
4   Draft/Final Report										M

# COMMUNITY FACILITY & PROGRAM REPORT

Thank You!

Questions?    Comments?

Daniel Biggs, RLA  
Principal-in-Charge

